

SUMITOMO SH235-6

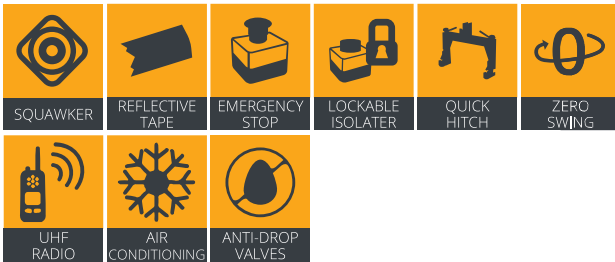
25 TONNE



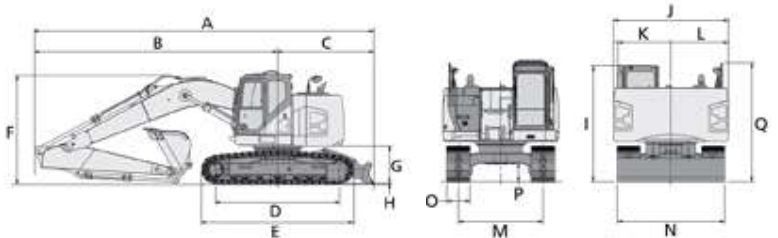
DIMENSIONS & RANGE

Overall Length:	9300mm
Overall Width:	2800mm
Overall Height:	3010mm
Overall Weight:	25000kg
Dig Depth:	5480mm

FEATURES



COMPLIANCE



COMPATIBLE WITH



Model	SH235X-6	
Arm length	2.40 m	2.94 m
A	9 300 mm	9 210 mm
B	6 690 mm	6 600 mm
C	2 610 mm	2 610 mm
D	3 370 mm	3 370 mm
E	4 180 mm	4 180 mm
F	3 180 mm	2 960 mm
G	1 020 mm	1 020 mm
H	26 mm	26 mm
I	3 010 mm	3 010 mm
J	2 990 mm	2 990 mm
K	1 390 mm	1 390 mm
L	1 500 mm	1 500 mm
M	2 200 mm	2 200 mm
N	2 800 mm	2 800 mm
O	600 mm	600 mm
P	440 mm	440 mm
Q	3 090 mm	3 090 mm

Victoria's dry hire equipment specialist. We have your equipment needs covered.

7-9 Kearney St., Bayswater, VIC 3153 | Ph: 03 9756 3950 | Email: sales@focusmachinery.com.au | www.FocusMachinery.com.au

CASE CX250

25 TONNE



DIMENSIONS & RANGE

Overall Length:	9880mm
Overall Width:	3190mm
Overall Height:	3200mm
Overall Weight:	26100kg
Dig Depth:	6900mm

FEATURES

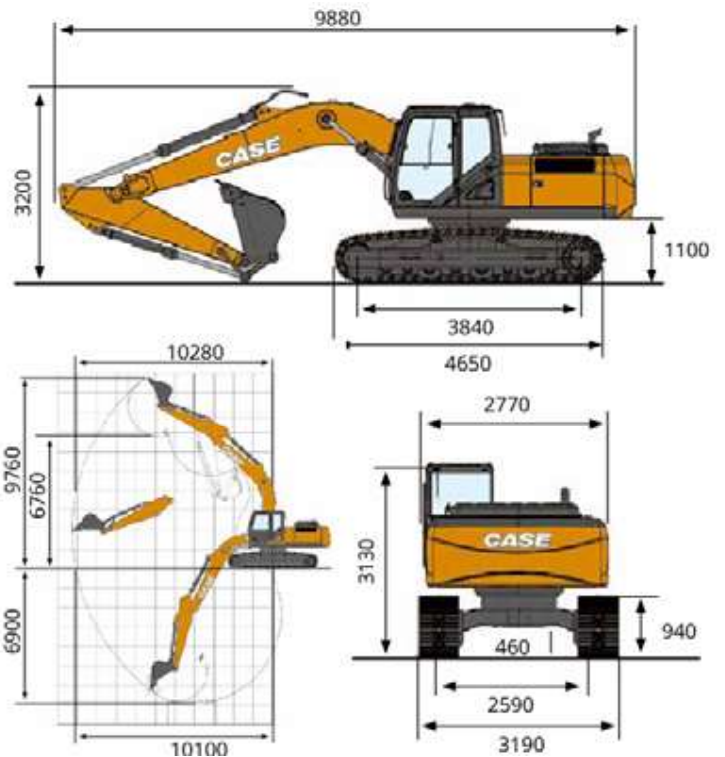
SQUAWKER	REFLECTIVE TAPE	EMERGENCY STOP	LOCKABLE ISOLATER	QUICK HITCH	ZERO SWING
UHF RADIO	AIR CONDITIONING	ANTI-DROP VALVES			

COMPLIANCE

DAILY CHECKLIST	FIRE EXTINGUISHER	OPERATOR'S MANUAL	PLANT ASSESSMENT	REVERSE BEEPER	ROTATING BEACON

COMPATIBLE WITH

AUGER DRIVES	COMPACTION PLATE	COMPACTION WHEEL	GRAPPLE BUCKET	HOLE CLEANER
HYDRAULIC HAMMERS	SIEVE BUCKET	STICK RAKE	TILT BUCKET	GP BUCKETS
AUGERS	CORE BARRELS	GRADER BLADES		



Unit: mm

Victoria's dry hire equipment specialist. We have your equipment needs covered.

7-9 Kearney St., Bayswater, VIC 3153 | Ph: 03 9756 3950 | Email: sales@focusmachinery.com.au | www.FocusMachinery.com.au