

# KUBOTA KX033-4

**3.5 TONNE**



## DIMENSIONS & RANGE

Overall Length:	4730mm
Overall Width:	1550mm
Overall Height:	2480mm
Operating Weight:	3365kg
Dig Depth:	3210mm

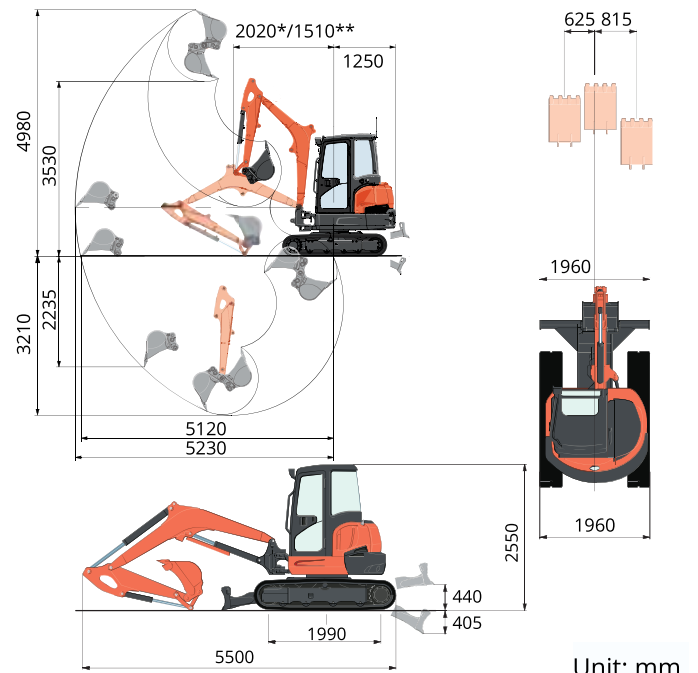
## FEATURES



## COMPLIANCE



## COMPATIBLE WITH



\*without swing \*\*with swing

Victoria's dry hire equipment specialist. We have your equipment needs covered.

7-9 Kearney St., Bayswater, VIC 3153 | Ph: 03 9756 3950 | Email: sales@focusmachinery.com.au | www.FocusMachinery.com.au

# KUBOTA U35

**3.5 TONNE**



## DIMENSIONS & RANGE

Overall Length:	4750mm
Overall Width:	1700mm
Overall Height:	3400mm
Overall Weight:	3690kg
Dig Depth:	3010mm

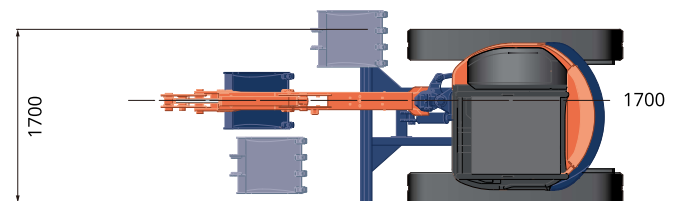
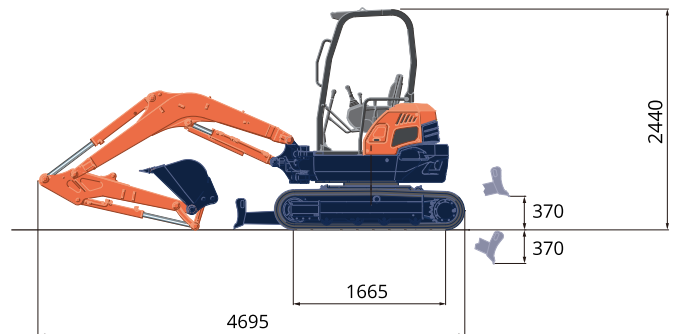
## FEATURES



## COMPLIANCE



## COMPATIBLE WITH



Unit: mm

Victoria's dry hire equipment specialist. We have your equipment needs covered.

7-9 Kearney St., Bayswater, VIC 3153 | Ph: 03 9756 3950 | Email: sales@focusmachinery.com.au | www.FocusMachinery.com.au

# CAT 303e CR

3.5 TONNE



## DIMENSIONS & RANGE

Overall Length:	4470mm
Overall Width:	1500mm
Overall Height:	2500mm
Overall Weight:	3040kg
Dig Depth:	2750mm

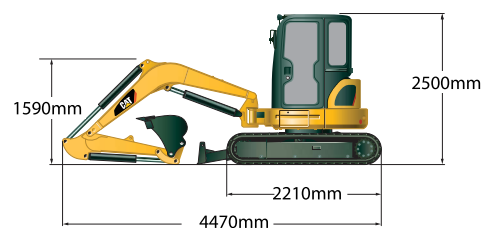
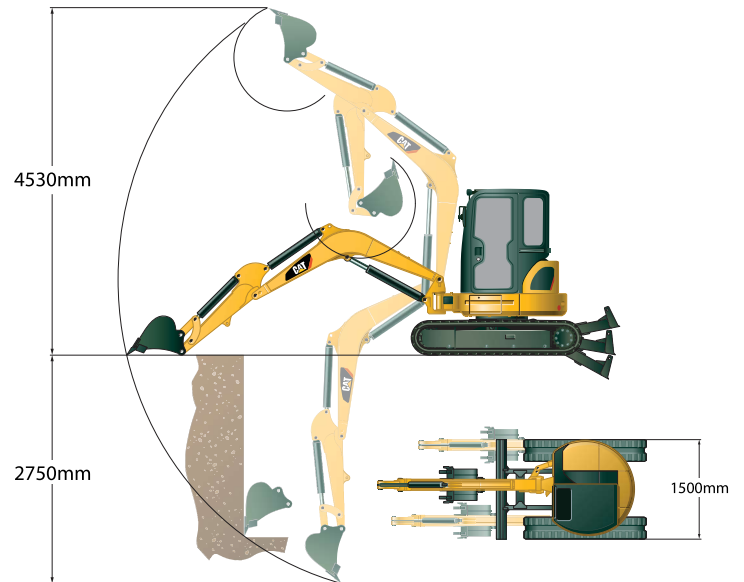
## FEATURES



## COMPLIANCE



## COMPATIBLE WITH



Unit: mm

Victoria's dry hire equipment specialist. We have your equipment needs covered.

7-9 Kearney St., Bayswater, VIC 3153 | Ph: 03 9756 3950 | Email: sales@focusmachinery.com.au | www.FocusMachinery.com.au