

DIGGA EXCAVATOR & SKID STEER ATTACHMENTS



EXCAVATOR ATTACHMENTS



DIGGA

AUGER DRIVES

THE MOST ADVANCED AUGER DRIVE
YOU'VE EVER OWNED OR OPERATED

NOT JUST AN ASSEMBLER, DIGGA ARE THE
ORIGINAL DESIGNERS AND MANUFACTURERS
OUR CORE EXPERTISE 1,100Nm – 500,000Nm
AND EVERYTHING IN BETWEEN



EXTENSIVE
WARRANTY



A **TRUSTED** REPUTATION FOR DELIVERING **QUALITY PRODUCTS** THAT PERFORM



INTEGRATED MOTOR AND OUTPUT HOUSING

POWERED BY
EATON

In a joint effort with Eaton we have developed a range of custom hydraulic motors specifically designed for attachments, utilising EATON Geroler technology.

- The motor is integrated into the input housing.
- The new design significantly reduces the weight and overall length of the drives.
- Integrated pressure relief valve.
- Fittings are placed at a location and angle that is ideal for drilling.



MORE COMPACT DESIGN, LESS MAINTENANCE

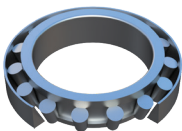
No compromise in quality, gears are precision machined from a high grade alloy steel, specifically formulated for the manufacturing of high performance gears. Compact design allows for greater length under the drive for drilling or pile installation.



2 PIECE SHAFT DESIGN

The Digga shaft is a separate component to the planetary carrier, isolating the planetary gears from the pushing, pulling and bending forces generated by the machine.

- Heavy duty, custom designed lock nut.
- Lifetime warranty on shaft pullout.



HIGHEST SIDE LOAD RATINGS

Under torque load, the Digga two piece shaft design ensures there is no increased load on the bearings. The bearings do the job they were designed for, efficiently maintaining axial and side loading.

AUGER DRIVE SINGLE SPEED

FEATURES

- Compact high torque Digga manufactured gearbox.
- Highly efficient design with less moving parts.
- Fitted with Eaton/Digga geroler hydraulic motor.
- No case drain required.
- Full range of shafts available upon request.
- Extreme duty shaft locking system.
- Drive fits down the hole for greater digging depth.
- Low maintenance with 5 year gear box and 3 year motor warranty.



Easy Drive selection - Digga's Premium Drives are optimised around the tonnage of your machine ensuring more accurate drive selection.

E.G 5 TONNE MACHINE

Standard Selection - PD5

Lighter Duty (more speed) - PD4

Heavy Duty (more power) - PD6

MICRO EXCAVATORS

750KG - 2T

	PDD	PDX	PDX2
Rec Flow Range	15-45 lpm	20-50 lpm	30-50 lpm
Max Torque	1,166 Nm	1,743 Nm	2,307 Nm
Pressure Valve Fitted	N / A	N / A	N / A
Max Pressure (Do not exceed)	240 bar @ 60 lpm		
Max Flow (Do not exceed)	115 lpm @ 130 bar		
Max Power (Do not exceed)	25 Kw (34 hp)		
Overall Length	500mm	557mm	557mm
Diameter	187mm	187mm	187mm
Weight (no hitch)	41 Kg	45 Kg	45 Kg
Std Output Shaft	65mm RND	65mm RND	65mm RND



MINI EXCAVATORS

2T - 5T

	PDX2	PD3	PD4	PD5	PD6
Rec Flow Range	30-50 lpm	45-75 lpm	55-85 lpm	60-95 lpm	70-115 lpm
Max Torque	2,307 Nm	3,544 Nm	4,448 Nm	5,151 Nm	5,596 Nm
PRV Fitted	N / A	Optional	Optional	Optional	Optional
Max Pressure (Do not exceed)	240 bar @ 60 lpm				
Max Flow (Do not exceed)	115 lpm @ 130 bar				
Max Power (Do not exceed)	25 Kw (34 hp)				
Overall Length	557mm	579mm	579mm	579mm	730mm
Diameter	187mm	240mm	240mm	240mm	240mm
Weight (no hitch)	45Kg	57Kg	58Kg	67Kg	89Kg
Std Output Shaft	65mm RND	65mm RND	75mm SQ	75mm SQ	75mm SQ
Halo Available	No	Yes	Yes	Yes	Yes



AUGER DRIVE SINGLE SPEED

CONTINUED

EXCAVATORS

5T - 10T

	PD5	PD6	PD7	PD6HF	PD8HF	PD10HF
Rec flow range	60-95 lpm	70-115 lpm	75-115 lpm	70-150 lpm	80-200 lpm	100-200 lpm
Max torque	5,151 Nm	5,596 Nm	6,040 Nm	5,634 Nm	7,136 Nm	9,690 Nm
PRV fitted	Optional	Optional	Optional	Included	Included	Included
Max pressure (Do not exceed)	240 bar @ 60 lpm			240 Bar @ 130 lpm		
Max flow (Do not exceed)	115 lpm @ 130 bar			210 lpm @ 145 bar	230 lpm @ 130 Bar	230 lpm @ 130 Bar
Max power (Do not exceed)	25 Kw (34 hp)			50 Kw (67HP)		
Overall length	579mm	730mm	734mm	950mm	950mm	950mm
Diameter	240mm	240mm	240mm	290mm	290mm	290mm
Weight (no hitch)	67 Kg	89 Kg	90 Kg	149 Kg	149 Kg	149 Kg
Std output shaft	75mm SQ	75mm SQ	75mm SQ	75mm SQ	75mm SQ	75mm SQ
Halo Available	Yes	Yes	Yes	No	No	No

EXCAVATORS - HIGH FLOW

5T - 12T

	PD4HF	PD6HF	PD8HF	PD10HF
Rec Flow Range	70-150 lpm	70-150 lpm	100-200 lpm	100-200 lpm
Max Torque	4,473 Nm	5,634 Nm	7,136 Nm	9,690 Nm
PRV Fitted	Included	Included	Included	Included
Max Pressure (Do not exceed)	240 bar @ 130 lpm			
Max Flow (Do not exceed)	170 lpm @ 180 bar	210 lpm @ 145 bar	230 lpm @ 130 bar	230 lpm @ 130 bar
Max Power (Do not exceed)	50 Kw (67 hp)			
Overall Length	950mm	950mm	950mm	950mm
Diameter	290mm	290mm	290mm	290mm
Weight (no hitch)	125 Kg	149 Kg	149 Kg	149 Kg
Std Output Shaft	75mm SQ	75mm SQ	75mm SQ	75mm SQ



THE BEST DOWNUNDER SINCE 1981

EXCAVATORS 10T - 20T

	PD12	PD15	PD18	PD22	PD25
Rec Flow Range	120-230 lpm	120-230 lpm	120-230 lpm	120-230 lpm	120-230 lpm
Max Torque	11,268 Nm	13,918 Nm	17,630 Nm	22,176 Nm	26,267 Nm
PRV Fitted	Included	Included	Included	Included	Included
Max Pressure (Do not exceed)	240 bar @ 130 lpm				
Max Flow (Do not exceed)	230 lpm @ 130 bar	210 lpm @ 145 bar	230 lpm @ 130 bar	230 lpm @ 130 bar	230 lpm @ 130 bar
Max Power (Do not exceed)	50 Kw (67 hp)				
Overall Length	950mm	1,006mm	1,006mm	1,006mm	1,152mm
Diameter	290mm	290mm	290mm	290mm	355mm
Weight (no hitch)	149 Kg	176 Kg	176 Kg	176 Kg	300 Kg
Std Output Shaft	75mm SQ	75mm SQ	75mm SQ	75mm SQ	100mm SQ

EXCAVATORS 20T - 50T

	PD25	PD30	PD40	PD50
Rec Flow Range	120-230 lpm	120-230 lpm	120-230 lpm	120-230 lpm
Max Torque	26,267 Nm	30,543 Nm	33,041 Nm	38,420 Nm
PRV Fitted	Included	Included	Included	Included
Max Pressure (Do not exceed)	240 bar @ 130 lpm			
Max Flow (Do not exceed)	230 lpm @ 130 bar			
Max Power (Do not exceed)	50 Kw (67 hp)			
Overall Length	1,152mm	1,152mm	1,152mm	1,152mm
Diameter	355mm	355mm	355mm	355mm
Weight (no hitch)	300 Kg	300 Kg	300 Kg	300 Kg
Std Output Shaft	100mm SQ	100mm SQ	100mm SQ	100mm SQ



AUGER DRIVE

2-SPEED

Digga's 2 speed auger drives have been specially designed for a wider range of applications without the need for multiple drive units.

2 SPEED OPTIONS:

- **LOW SPEED - HIGH TORQUE:** Suitable for large holes / rocky or heavy duty drilling.
- **HIGH SPEED - LOW TORQUE:** Suitable for smaller holes / soft or easy-to-dig.

SUITABLE FOR A WIDE RANGE OF GROUND CONDITIONS:

- Soft loose soils, hard soils, and rocky conditions.
- Integrated PRV (Pressure Relief Valve).
- Simple electrical connection: Use machine joystick or optional switch box.

- ✓ **DRILL LARGE DIAMETER HOLES** with the high torque / low speed setting. Ideal for rock drilling.
- ✓ **DRILL SMALL DIAMETER HOLES** with the low torque / high speed setting. Finish the job quicker.
- ✓ **DRILL DEEPER INTO HARSHER GROUND** with the flick of a switch.
- ✓ **MAKES IT EASIER** to remove spoil from your auger in high speed mode.
- ✓ **5YR GEARBOX & 3YR MOTOR WARRANTY** with no additional maintenance costs.

CHANGE SPEEDS WITH
A FLICK OF A SWITCH



- ✓ SPEED WHEN YOU NEED IT
- ✓ TORQUE WHEN YOU NEED IT

IT'S LIKE HAVING 2 DRIVES IN 1

EXCAVATORS - UP TO 6T - STANDARD FLOW

	PDT3	PDT6
Recommended Flow	20-75 lpm	20-75 lpm
Max Torque (Nm) @ 240 bar	2,954	4,664
Motor	2K Bell EATON	2K Bell EATON
Pressure Valve Fitted	Included	Included
Energy Control Valve	N/A	N/A
Case Drain Required	Optional	Optional
Max Pressure (Do not exceed)	200 Bar @ 76 lpm	
Max Flow (Do not exceed)	76 lpm @ 200 Bar	
Max Continuous Power (Do not exceed)	25 Kw	
Overall Length (mm)	766	820
Diameter (mm)	240	340
Overall Width (mm)	310	392
Weight (Kg)	75	134
STD Output Shaft	65mm RND	75mm SQ



EXCAVATORS - UP TO 15T - HIGH FLOW

MODEL	PDT4HF	PDT6HF	PDT8HF	PDT10HF	PDT12
Recommended Flow	40-120 lpm	40-150 lpm	40-150 lpm	40-150 lpm	40-180 lpm
Max Torque (Nm) @ 240 bar	4,673	5,758	7,881	9,916	11,531
Motor	Vis EATON	Vis EATON	Vis EATON	Vis EATON	Vis EATON
Pressure Valve Fitted	Included	Included	Included	Included	Included
Energy Control Valve	Optional	Optional	Optional	Optional	Optional
Case Drain Required	Included	Included	Included	Included	Included
Max Pressure (Do not exceed)	Do not exceed 240 Bar @ 150 lpm				
Max Flow (Do not exceed)	Do not exceed 180 lpm @ 200 Bar				
Max Continuous Power (Do not exceed)	Do not exceed 60 Kw (80HP)				
Overall Length (mm)	820	820	952	952	952
Diameter (mm)	340	340	340	340	340
Overall Width (mm)	392	392	392	392	392
Weight (Kg)	134	134	158	159	159
STD Output Shaft	75mm SQ	75mm SQ	75mm SQ	75mm SQ	75mm SQ

AUGER DRIVE

2-SPEED

CONTINUED

EXCAVATORS - 15 TO 22T

MODEL	PDT18	PDT22
Recommended Flow	40-180 lpm	40-180 lpm
Max Torque (Nm) @ 240 bar	18,372	22,640
Motor	Vis EATON	Vis EATON
Pressure Valve Fitted	Included	Included
Energy Control Valve	Optional	Optional
Case Drain Required	Yes (Included)	Yes (Included)
Max Pressure	Do not exceed 240 Bar @ 150 lpm	
Max Flow	Do not exceed 180 lpm @ 200 Bar	
Max Continuous Power	Do not exceed 60 Kw (80HP)	
Overall Length (mm)	979	979
Diameter (mm)	340	340
Overall Width (mm)	392	392
Weight (No linkage and hitch) (Kg)	193	193
STD Output Shaft	75mm Square	75mm Square

EXCAVATORS - 20 TO 50T

MODEL	PDT25	PDT30	PDT40	PDT50
Recommended Flow	40-180 lpm	40-180 lpm	40-180 lpm	40-180 lpm
Max Torque (Nm) @ 240 bar	27,373	31,829	33,733	39,224
Motor	Vis EATON	Vis EATON	Vis EATON	Vis EATON
Pressure Valve Fitted	Included	Included	Included	Included
Energy Control Valve	Optional	Optional	Optional	Optional
Case Drain Required	Included	Included	Included	Included
Max Pressure	Do not exceed 240 Bar @ 150 lpm			
Max Flow	Do not exceed 180 lpm @ 200 Bar			
Max Continuous Power	Do not exceed 60 Kw (80HP)			
Overall Length (mm)	1217	1217	1217	1217
Diameter (mm)	355	355	355	355
Overall Width (mm)	400	400	400	400
Weight (Kg)	305	305	305	305
STD Output Shaft	100mm SQ	100mm SQ	100mm SQ	100mm SQ

HEAVY DUTY

2-SPEED

Digga's SD two speed drive range for drilling suits large excavators 30 to 50 Tonne with flows up to 380 lpm.

EXCAVATORS - 30 TO 50T - HEAVY DUTY

MODEL	SD45	SD50	SD70	SD80	SD90
Recommended Flow	Up to 380 lpm	Up to 380 lpm	Up to 380 lpm	Up to 380 lpm	Up to 380 lpm
Max Torque (Nm) @ 240 bar	44,333	51,985	68,018	81,986	91,215
Motor	Radial Piston	Radial Piston	Radial Piston	Radial Piston	Radial Piston
Pressure Valve Fitted	Included	Included	Included	Included	Included
Energy Control Valve	Optional	Optional	Optional	Optional	Optional
Case Drain Required	Yes (Hoses included)				
Max Pressure	Do not exceed 240 bar @ 380 lpm				
Max Flow	Do not exceed 380 lpm @ 240 bar				
Max Continuous Power	Do not exceed 150 Kw (201 hp)				
Overall Length (mm)	1493	1493	1493	1493	1493
Diameter (mm)	600	600	600	600	600
Weight (Kg)	838	836	836	836	843
STD Output Shaft	100mm SQ	100mm SQ	100mm SQ	100mm SQ	100mm SQ



AUGER DRIVES HIGH POWERED

Digga's high powered range of auger drives have been designed to handle higher machine hydraulic pressures to deliver more power at higher RPM to suit drilling applications on 15 to 30 tonne machines.

- High efficiency radial piston motor.
- Innovative design with less moving parts.
- Your machine does not need to be detuned.
- Compact, powerful Digga planetary gearbox.
- 2 Piece shaft with a lifetime pullout warranty.
- Low maintenance.



EXCAVATORS - 15 TO 50T

MODEL	PD30HP	SD45HP	SD55HP
Flow Range	15-240 lpm	15-240 lpm	15-240 lpm
Max Torque (Nm) @ 345 bar	30,250	44,150	57,750
Motor	Radial Piston		
Pressure Valve Fitted	Optional		
Case Drain Atmospheric Vent	Included		
Energy Control Valve	N/A		
Case Drain Required	Yes (Hoses included)		
Max Pressure (Bar) - Do not exceed	345 Bar @ 174 lpm		
Max Flow (lpm) - Do not exceed	240 lpm @ 230 Bar		
Power (Kw) - Do not exceed	90 Kw (121HP)		
Overall Length (mm)	1221	1274	1274
Diameter (mm)	460	530	530
Weight (No linkage and hitch) (Kg)	453	646	646
STD Output Shaft	100mm Square		

**THESE DRIVES ARE THE PERFECT
CHOICE FOR HEAVY DUTY DRILLING**

SEE NEXT PAGE

HEAVY DUTY DRILLING

TAPERED ROCK AUGERS

Tapered rock augers are designed to drill in extreme rock conditions. The engineered design cutting system maximises penetrating abilities of the rotating pick tooth. The design enables the teeth to fracture the rock, allowing for penetration into ground normally unachievable with a standard auger.

- Heavy duty flighting.
- Heavy duty centre shaft.
- Rotating pick teeth and pilot.
- Hard faced flight edges.
- Australian made quality using superior materials.



CORE BARRELS

Core Barrels are used when conventional augers are less effective or in conjunction with tapered rock augers for very hard rock drilling. The Core Barrel is designed with a thin cutting edge to maximise the penetration rate through less contact surface area having to be cut and removed.

Digga Core Barrels range from 300mm - 2000mm in diameter and come fitted with a Kelly Box (drive hub) to suit your machine.

- Standard or heavy duty ring option available.
- Comes fitted with a Kelly Box (drive hub) to suit your machine.
- Wear ribs extend barrel life & eliminates barrel stalling.
- Custom Buckets & other tooth options available.
- Provision for reamer bars.



DRILLING AUGERS

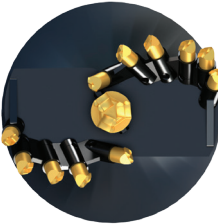
Digga's True Cut augers boast a heavy duty design with high efficiency cutting heads to maximise your drilling performance.

Digga have 3 ranges available including earth augers (A Series), combo augers (RC Series) and dedicated rock augers (DR Series).



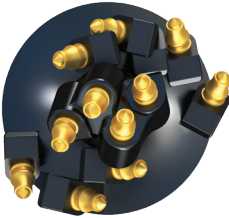
EARTH AUGERS (A) BLADED TEETH EARTH/CLAY/SHALES

ALL PURPOSE EARTH AUGER FOR
GENERAL DRILLING



EARTH / ROCK COMBO AUGER (RC) TAPER TEETH (ALL GROUND CONDITIONS)

TAPER TOOTH DESIGN FOR THE
ULTIMATE ALL PERFORMANCE AUGER



ROCK AUGER (DR) ROTATING ROCK PICK TEETH (SHALE/ FRACTURABLE ROCK)

HEAVY DUTY DESIGN AND EFFICIENT
CUTTING HEAD MAKE THE ULTIMATE
ROCK DRILLING AUGER

WEARPARTS

Teeth and Pilots to suit most ground conditions.



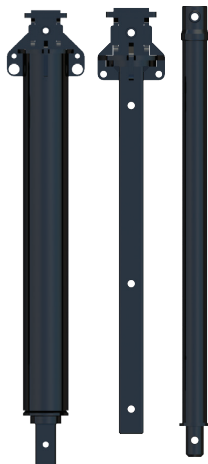
- **Earth** - a durable and cost effective design for light to moderate ground conditions.
- **TC** - the flat tungsten carbide braised to your wear parts ensures longer life.
- **MFT** - the multi faced tungsten carbide is suitable for medium to heavy solid ground conditions, compact soils, heavy clay, asphalt, concrete, frozen ground.
- **TT** - is versatile tooth for drilling in most ground conditions from soft soil to hard rock it has a morse tapered shank for tooth retention.
- **Rock Pick** - designed for shale, fracturable rock, concrete and abrasive conditions.

EXTENSIONS & HOLE CLEANERS

EXTENSIONS

Digga's drilling extension range is the ultimate in quality and cost effectiveness. Manufactured inhouse by Digga using only the highest grade materials and strictest quality control.

- Large range of extensions up to 4000mm in length.
- High quality steel.
- Telescopic design for easier operation and storage.
- Easy fit design.



HOLE CLEANERS

Hole Cleaners are used to remove spoil from holes after drilling to create a clean & flat base. Ideal application includes installation of piers and concrete foundations.

- Remove spoil from holes after drilling to create a clean & flat base.
- The ideal attachment for a clean & flat base.
- Available with fixed or removable shaft.
- Diameters up to 1500mm.
- Suits Drives PDD-PD10.

APPLICATION INCLUDES PIER & FOUNDATION INSTALLATION AND CLEANING OF HOLES WHERE USE OF A CLEANING BUCKET IS NOT VIABLE.



HORIZONTAL DRILLING

Digga's horizontal borer mount allows an auger drive to be mounted horizontally and dropped below ground level for under road boring or reaming. Eliminating the need to remove pavements or roadway for pipe and cable laying.

- Continuous flighted augers available.
- Extend the length of the continuous flight auger with the use of hex joiners and D-Clips.
- Replaceable pilots available.



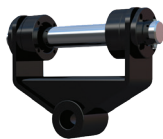
NOTE: Horizontal borer mount only. Drive unit and hitch not included.



MACHINE HITCHES

Digga manufactures a range of hitches to suit excavators up to 90 tonne.

- Fixed and loose pin design available.
- Australian made quality.
- Premium grade steel.
- Extra Heavy Duty, fully engineered design.



SINGLE PIN



CRADLE HITCH



DOUBLE FIXED PIN



DOUBLE LOOSE PIN

SWING CONTROL

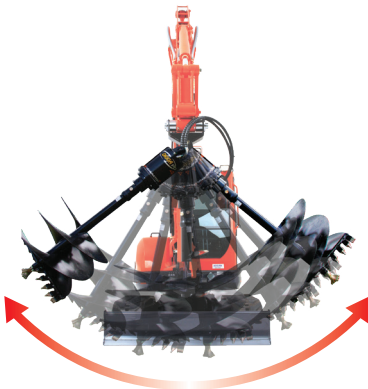
SWING CONTROL SYSTEM - PATENTED

SCS controls the pendulum action of your auger making it easier to operate and control, safer on the work site and greatly improves operator efficiency and effectiveness. Swing Control requires no additional hydraulics. Unique independent dampening cylinders control the forward/aft and side to side movement.

Swing Control can also be retrofitted to most existing auger drives.



- Increased efficiency.
- Increased productivity.
- Increased safety.



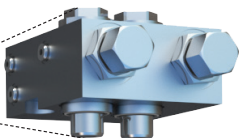
SWING WITHOUT SCS



SWING WITH SCS

PILING & FOUNDATION

ENERGY CONTROL VALVE (ECV)



Digga's Energy Control Valve (ECV) lets you turn your auger drive into a dedicated screw anchor drive.

Pile kick-back can cause a cavitation of your motor which in turn leads to motor failure. Protect your auger drive's motor when installing piles, with a Digga Energy Control Valve.

- Protects the motor from rapid oil decompression.
- Energy Control Valve can be fitted to most Digga Premium Drive units for screw anchoring applications.
- Recommended for jobs where 16,000Nm of torque or more is required.

RYNO HITCH

Developed for faster connection to the auger or pile, the Ryno Cradle Hitch is designed to handle the torsional loads of anchors and screw piling. The front cradle allows the operator to angle the drive up to 90 degrees for easy connection to augers or anchors while a rear cradle stops the auger drive or anchor from swinging about whilst manoeuvring over uneven terrain.

- 3 cradle positions.
- Premium grade steel.
- Extra Heavy Duty, fully engineered design.
- Compact and faster connection to the auger or pile.
- Safer. No more standing piles or large augers with persons or machinery to connect your drive.



MONITORING EQUIPMENT

TORQUE HUB

Replaces the Kelly Bar Adaptor or mount directly onto the drive-head output shaft.

- 99%+ Accurate Torque Measurement.
- Superior design & engineered for tough conditions.
- Wireless in-cab display.
- To suit 75mm Square & 100mm Square shaft sizes.



TORQUE SPOOL

The flanged "spool" option utilising the same patented technology as the Torque Hub.

- 99%+ Accurate Torque Measurement.
- Superior design & engineered for tough conditions.
- Wireless in-cab display.
- To suit drives up to 500,000 Nm.



PRESSURE DIFFERENTIAL GAUGE

Digga's Pressure Differential Gauge offers a more accurate way of measuring the true hydraulic pressure being applied through the hydraulic motor and gearbox of your drive unit.



DIGGA'S - ALIGNMENT SYSTEM

Diggaalign ideal for drilling, screw piling & core barrelling applications. Designed to show the operator when the top of the pylon/pile/auger is off plumb, and helps to maintain accuracy throughout the installation.



BIGFOOT TRENCHERS

- Start Trenching with the crumber bar in the down position.
- Adjustable Skid Foot - Ensures the operator trenches to a set depth at all times.
- Foot is visible from the cab - Ensures that the trencher is in the correct trenching position.
- 3 different chain options - Trench in most ground conditions.
- Australian made quality.
- 3 year gear box and 2 year motor warranty.

BIGFOOT TRENCHERS - 1 1/8" CHAIN

	Mini Bigfoot	BFT-900
Length	1402 mm	1920 mm
Horizontal Height	645 mm	668 mm
Width	989 mm	1212 mm
Weight - 150mm Combo Chain	TBA	261 Kg
Motor Size	2K Bell EATON	2K Bell EATON
Hydraulic Flow	40-90 lpm	50-95 lpm
Max Pressure - Do not exceed	240 bar @ 60 lpm	240 bar @ 60 lpm
Max Flow - Do not exceed	95 lpm @ 200 bar	95 lpm @ 200 bar
Max Continuous Power	25 Kw (34 hp)	25 Kw (34 hp)
Cutting Width	100, 150, 200mm	100, 150, 200mm
Cutting Depths	Up to 900mm	Up to 900mm



BIGFOOT XD TRENCHERS

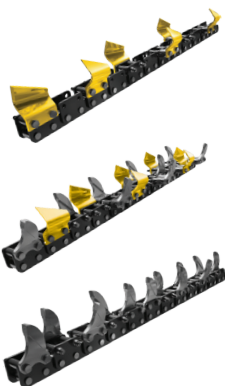
BIGFOOT XD TRENCHERS - 2" CHAIN

	BFTXD-900	BFTXD-1200	BFTXD-1200HF	BFTXD-1500HF
Length	2225mm	2532mm	2532mm	2689mm
Horizontal Height	777mm	777mm	777mm	836mm
Width	1212mm	1212mm	1212mm	1212mm
Weight - 150mm Combo Chain	388kg	405kg	424kg	461kg
Motor Size	2K Bell EATON	2K Bell EATON	6K Bell EATON	6K Bell EATON
Hydraulic Flow	60-115 lpm	60-115 lpm	105-170 lpm	105-170 lpm
Max Pressure - Do not exceed	240 bar @ 60 lpm		240 bar @ 130 lpm	
Max Flow - Do not exceed	95 lpm @ 200 bar		170 lpm @ 180 bar	
Max Continuous Power	25 Kw (34 hp)		50 Kw (67 hp)	
Cutting Width	150, 200, 250, 300mm			
Cutting Depths (mm)	Up to 900mm	Up to 1200mm	Up to 1200mm	Up to 1500mm



CHAINS

All Digga trenchers are available with a variety of chain types and widths to suit your individual needs. We only use Anti Back Flex chains to give you better performance.



EARTH

Cup tooth on every second station. Best for soft clean ground with no floaters or tree roots.

COMBO

Combination of earth and tungsten teeth. Suitable for most applications. Cuts through hard soils, roots, soft shale and rocky ground.

DIGGATAC

Full tungsten teeth on every station. Best for rocky hard shale, asphalt and frozen ground.

COMPACTION WHEEL

The Digga compaction wheel, designed for easy compaction of dirt back into the trench.

- Heavy duty durable hammers.
- Available in 4 trench widths; 100mm, 150mm, 200mm and 250mm.
- Fully sealed self aligning bearings ensuring longer product life.
- 100% Australian manufactured bearing housing ensuring greater protection for your bearings.

	100mm	150mm	200mm	250mm
Wheel Diameter	600mm	600mm	600mm	600mm
Height	736mm	736mm	736mm	736mm
Overall Diameter	680mm	680mm	680mm	680mm
Overall Width	410mm	410mm	410mm	410mm
Hammer QTY	20	30	40	50
Weight	143kg	165kg	185kg	207kg

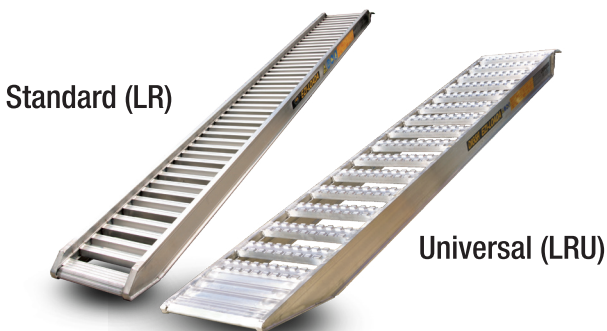


EZI LOADER RAMPS

A light weight loading ramp with enhanced safety that delivers on quality, performance and is cost effective. European designed and engineered, the new Digga Ezi-Loada ramps feature the most advanced design in the Australian market today. Digga's new aluminium loading ramps include a Standard range - LR (1.5t to 6.2t) & a Universal range - LRU (5.2t to 9t).

- 3 different connection options.
- Enhanced rail strength.
- Patented, extruded, double T rail with interlocking rung design.
- Superior strength and durability.

Code	Tonnage	Length	Beam	Int Width	Ext Width	Weight
LR152530	1.5	2500mm	64mm	255mm	300mm	14kg
LR233030	2.0	3000mm	100mm	300mm	360mm	23kg
LR303030	3.0	3000mm	115mm	300mm	360mm	26kg
LR303535	3.0	3500mm	120mm	350mm	410mm	36kg
LR353535	3.5	3500mm	125mm	350mm	410mm	37kg
LR403545	4.0	3500mm	140mm	450mm	510mm	46kg
LR473545	4.7	3500mm	155mm	450mm	510mm	46kg
LR473550	4.7	3500mm	165mm	500mm	560mm	51kg
LR593545	5.9	3500mm	150mm	450mm	510mm	53kg
LRU593550	6.2	3500mm	150mm	500mm	560mm	60kg
LRU663550	7.0	3500mm	170mm	500mm	560mm	61kg
LRU823550	9.0	3500mm	180mm	500mm	560mm	77kg



Standard (LR)

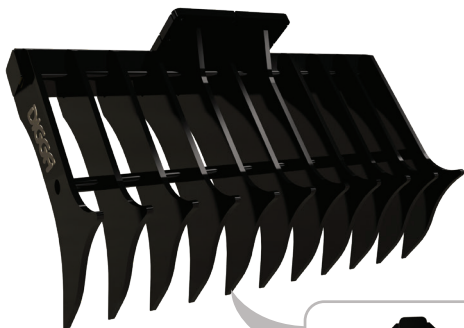
Universal (LRU)

VEGETATION MANAGEMENT STICK RAKE

The excavator Stick Rake is ideal for fast clean-ups, vegetation management, sifting soil/rocks and removing unwanted shrubbery and overgrowth.

Material can be sifted and sorted to clear out unwanted debris and leave good soil or material behind. The heavy duty 1200mm wide design is suitable for excavator from 3 tonnes to 10 tonnes.

- 1200mm rake width.
- Heavy duty 16mm thick tynes.



**RAKE IN FORWARD
AND REVERSE**



Length	1232mm
Height	703mm
Width	376mm
Tyne Spacing	102mm
Number of Tynes	11
Weight	194Kg



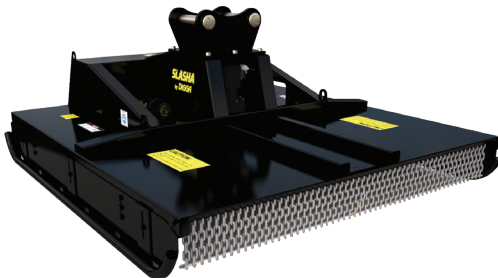
VEGETATION MANAGEMENT SLASHER

The Slasha with excavator mount is a slashing attachment for Excavators and Skid Steer Loaders that can be used for the effective cutting and clearing of grass and low ground shrubbery.

Slasher are ideal for excavators with flows up to 150lpm. Slashes come complete with hoses, couplers, and hitches to suit your excavator. Usage includes landscaping, agriculture, roadway maintenance, parks maintenance and general slashing.

- Australian made quality.
- Available widths: 1000mm, 1250mm, 1500mm, 1800mm.
- Chain curtain for debris suppression.
- Adjustable cutting height between 40 and 140mm.
- Rounded side skids for smoother manoeuvrability over uneven terrain.
- Also available for mini loaders, skid steer loaders, tractors.

	1000mm	1250mm	1500mm	1800mm
Weight	215kg	295kg	395kg	470kg
Length	1373mm	1700mm	1860mm	2115mm
Width (Overall)	1193mm	1443mm	1630mm	1930mm
Height	579mm	600mm	635mm	665mm
Rec. Flow	30 - 60 lpm	20 - 40 lpm	35 - 80 lpm	60 - 150 lpm
Max Pressure	240 bar	240 bar	240 bar	240 bar



VEGETATION MANAGEMENT MULCHER

The Digga Magnum Mulcher provides Excavators up to 20 tonne with the versatility of grinding small and large material, trees or brush, even above ground stumps with just one operator.

The Magnum Mulcher is the perfect value adding attachment for clearing firebreaks, land clearing, maintenance of park or forestry trails, vegetation management and re-remediation. Quickly mulch brush, vegetation and standing trees up to 200mm in diameter.

- Hydraulic driven, self aligning belt drive; low maintenance and great durability.
- Fixed hammers with replaceable carbide teeth.
- Shreds up to 200mm (8") diameter hardwood trees.
- Optional oil cooler available.
- On-board pressure gauge easily viewed from operator's station to monitor system on units fitted with oil coolers.
- Replaceable abrasion resistant AR400 wear plate on skid shoes.
- Deflector door controls particle size and discharge direction (optional for 60").

	36"	60"
Width	1232mm	1850mm
Cutting Width	915mm	1520mm
Number Teeth	26	44
Weight	726kg	1230kg
Hydraulic Flow	106-155 lpm	114-227 lpm
Machine Suitability	10T	20T



VEGETATION MANAGEMENT FLAIL MOWER

Digga's Flail Mower for Excavators up to 6 tonnes has been engineered to handle your toughest vegetation management jobs. Ideal for clearing vegetation on hillsides, roadways, ditches, riverbanks, lakes and more.

- Digga Flail Mowers are high quality, durable & better engineered.
- Our drive train & blade system are designed to out-perform and outlast the competition.
- Bi-directional cutting & discharge allows the operator to control the direction of cut materials away from buildings, roadways & bystanders.
- Digga Flail Mowers easily manage grass, vegetation & hardwoods up to 100mm in diameter. Diameters up to 150mm can be managed as well on an occasional basis.
- The adjustable skid shoes do not interfere with or obstruct cutting capability in either direction.
- The manifold can be mounted on either side for optimal hose routings.
- Blades come to a complete stop within 5 seconds when connected to the bi-directional circuit increasing safety for operators and bystanders.

	FLM-000001
Rec Flow Range	65-85 lpm
Max Pressure	240 Bar
Cutting Capacity	100mm
Rotational Speed	1800-2200 rpm
Machine Suitability	Up to 6 tonnes
Case Drain Required	Yes
Overall Width	813mm
Cutting Width	724mm
Depth	750mm
Weight	380 kg
Blade Stands	8



SKID STEER LOADER ATTACHMENTS



DIGGA

AUGER DRIVE SINGLE SPEED

DIGGA PREMIUM AUGER DRIVES FOR SKID STEERS

FEATURES

- Compact high torque Digga manufactured gearbox.
- Highly efficient design with less moving parts.
- Fitted with Eaton/Digga geroler hydraulic motor.
- No case drain required.
- Full range of shafts available upon request.
- Extreme duty shaft locking system.
- Drive fits down the hole for greater digging depth.
- Low maintenance with 5 year gear box and 3 year motor warranty.

SMALL SKID STEERS (UP TO 1700KG)

	PDD	PDX	PDX2
Rec Flow Range	15-45 lpm	20-50 lpm	30-50 lpm
Max Torque	1,166 Nm	1,743 Nm	2,307 Nm
Pressure Valve Fitted	N / A	N / A	N / A
Max Pressure	Do not exceed 240 bar @ 60 lpm		
Max Flow	Do not exceed 115 lpm @ 130 bar		
Max Power	Do not exceed 25 Kw (34 hp)		
Overall Length	500 mm	557 mm	557 mm
Diameter	187 mm	187 mm	187 mm
Weight (no frame)	41 Kg	45 Kg	45 Kg
Std Output Shaft	65mm RND	65mm RND	65mm RND



NOT JUST AN ASSEMBLER, DIGGA ARE THE ORIGINAL DESIGNERS AND MANUFACTURERS

OUR CORE EXPERTISE 2,900Nm – 500,000Nm AND EVERYTHING IN BETWEEN

STANDARD SKID STEERS (1.7T - 3.5T)

	PD3	PD4	PD5	PD6
Rec Flow Range	45-75 lpm	55-85 lpm	60-95 lpm	70-115 lpm
Nominal Torque	3,544 Nm	4,448 Nm	5,151 Nm	5,596 Nm
Pressure Valve Fitted	Optional	Optional	Optional	Optional
Max Pressure	Do not exceed 240 bar @ 60 lpm			
Max Flow	Do not exceed 115 lpm @ 130 bar			
Max Power	Do not exceed 25 Kw (34 hp)			
Overall Length	579 mm	579 mm	579 mm	730 mm
Diameter	240 mm	240 mm	240 mm	240 mm
Weight (no frame)	57 Kg	58 Kg	67 Kg	89 Kg
Std Output Shaft	65mm RND	75mm SQ	75mm SQ	75mm SQ
Halo Available	Yes	Yes	Yes	Yes



HIGH FLOW SKID STEER (3.5T-4.5T)

	PD4HF	PD6HF
Rec Flow Range	70-150 lpm	70-150 lpm
Max Torque	4,473 Nm	5,634 Nm
Pressure Valve Fitted	Included	Included
Max Pressure	Do not exceed 240 bar @ 130 lpm	
Max Flow (Do not exceed)	170 lpm @ 180 bar	210 lpm @ 145 bar
Max Power	Do not exceed 50 Kw (67 hp)	
Overall Length	950mm	950mm
Diameter	290mm	290mm
Weight (no hitch)	125 Kg	149 Kg
Std Output Shaft	75mm SQ	75mm SQ



AUGER DRIVE

2-SPEED

- ✓ SPEED WHEN YOU NEED IT
- ✓ TORQUE WHEN YOU NEED IT

IT'S LIKE HAVING 2 DRIVES IN 1

- LOW SPEED - HIGH TORQUE: Suitable for large holes / rocky or heavy duty drilling.
- HIGH SPEED - LOW TORQUE: Suitable for smaller holes / soft earth.

STANDARD FLOW 2 SPEED DRIVES

	PDT3	PDT6	PDT8
Recommended Flow	20-75 lpm	20-75 lpm	20-75 lpm
Max Torque (Nm) @ 240 bar	2,954	4,664	5,600
Motor	2K Bell EATON	2K Bell EATON	2K Bell EATON
Pressure Valve Fitted	Included	Included	Included
Energy Control Valve	N/A	N/A	N/A
Case Drain Required	Optional	Optional	Optional
Max Pressure (Do not exceed)	200 Bar @ 76 lpm		
Max Flow (Do not exceed)	76 lpm @ 200 Bar		
Max Continuous Power (Do not exceed)	25 Kw		
Overall Length (mm)	766	820	917
Diameter (mm)	240	240	240
Overall Width (mm)	310	392	392
Weight (Kg)	75	104	119
STD Output Shaft	65mm RND	75mm SQ	75mm SQ



HIGH FLOW 2 SPEED DRIVE

	PDT4HF	PDT6HF	PDT8HF
Recommended Flow	40-120 lpm	40-150 lpm	40-150 lpm
Max Torque (Nm) @ 240 bar	4,673	5,758	7,881
Motor	Vis EATON	Vis EATON	Vis EATON
Pressure Valve Fitted	Included	Included	Included
Energy Control Valve	Optional	Optional	Optional
Case Drain Required	Included	Included	Included
Max Pressure (Do not exceed)	Do not exceed 240 Bar @ 150 lpm		
Max Flow (Do not exceed)	Do not exceed 180 lpm @ 200 Bar		
Max Continuous Power (Do not exceed)	Do not exceed 60 Kw (80HP)		
Overall Length (mm)	820	820	952
Diameter (mm)	340	340	340
Overall Width (mm)	392	392	392
Weight (Kg)	134	134	158
STD Output Shaft	75mm SQ	75mm SQ	75mm SQ



DRILLING AUGERS

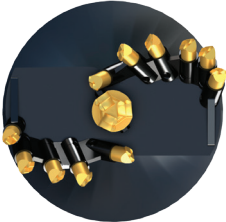
Digga's True Cut augers boast a heavy duty design with high efficiency cutting heads to maximise your drilling performance.

Digga have 3 ranges available including earth augers (A Series), combo augers (RC Series) and dedicated rock augers (DR Series).



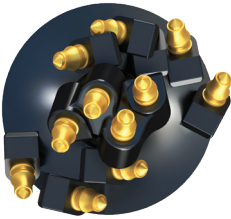
EARTH AUGERS (A) BLADED TEETH EARTH/CLAY/SHALES

ALL PURPOSE EARTH AUGER FOR
GENERAL DRILLING



EARTH / ROCK COMBO AUGER (RC) TAPER TEETH (ALL GROUND CONDITIONS)

TAPER TOOTH DESIGN FOR THE
ULTIMATE ALL PERFORMANCE AUGER



ROCK AUGER (DR) ROTATING ROCK PICK TEETH (SHALE/ FRACTURABLE ROCK)

HEAVY DUTY DESIGN AND EFFICIENT
CUTTING HEAD MAKE THE ULTIMATE
ROCK DRILLING AUGER



EXTENSIONS

- Large range of extensions up to 4000mm in length.
- High quality steel.
- Telescopic design for easier operation and storage.
- Easy fit design.



HOLE CLEANERS

- Remove spoil from holes after drilling to create a clean & flat base.
- Available with fixed or removable shaft.
- Diameters up to 1500mm.
- Suits Drives PDD-PD10.

HORIZONTAL DRILLING

Digga's horizontal drilling mount allows an auger drive to be mounted horizontally and dropped below ground level for under road boring or reaming. Eliminating the need to remove pavements or roadway for pipe and cable laying.

- Continuous flighted augers available.
- Extend the length of the continuous flight auger with the use of hex joiners and D-Clips.
- Replaceable pilots available.



NOTE: Horizontal borer mount sold separately. Drive unit and frame not included.



MIXER BOWL

Quick, easy and cost effective, convert your auger drive into a cement mixer. Simply remove your auger and connect mixer cradle and bowl to use.

- Easy to install.
- Suits all Digga Auger Drives, Mini Auger Drives and Auger Drives fitted with Swing Control System.
- Maintenance free.

	Small Bowl	Large Bowl
Total Bowl Capacity*	3.9 Cu ft / 110 L	5.7 Cu ft / 160 L
Working Bowl Capacity**	2.5 Cu ft / 70 L	4 Cu ft / 115 L
Weight - Bowl and cradle only	38kg	53kg

NOTE: Bowl and cradle only. Drive unit, hitch or frame not included.



(*) An upright position depicts total capacity.

(**) Maximum operating capacity is measured at an operating angle of 45 degrees.

SWING CONTROL

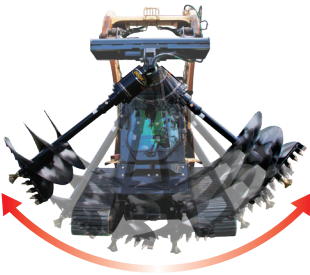
SWING CONTROL SYSTEM - PATENTED

SCS controls the pendulum action of your auger making it easier to operate and control, safer on the work site and greatly improves operator efficiency and effectiveness. Swing Control requires no additional hydraulics. Unique independent dampening cylinders control the forward/aft and side to side movement.

Swing Control can also be retrofitted to existing auger drives.



- Increased efficiency.
- Increased productivity.
- Increased safety.



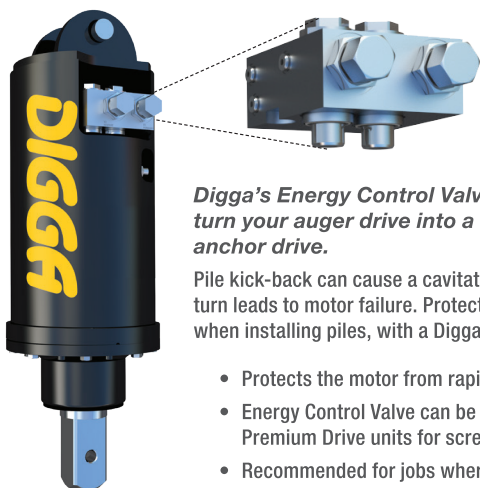
SWING WITHOUT SCS



SWING WITH SCS

PILING & FOUNDATION

ENERGY CONTROL VALVE (ECV)



Digga's Energy Control Valve (ECV) lets you turn your auger drive into a dedicated screw anchor drive.

Pile kick-back can cause a cavitation of your motor which in turn leads to motor failure. Protect your auger drive's motor when installing piles, with a Digga Energy Control Valve.

- Protects the motor from rapid oil decompression.
- Energy Control Valve can be fitted most Digga Premium Drive units for screw anchoring applications.
- Recommended for jobs where 16,000Nm of torque or more is required.

TPE - TELESCOPIC PILING & DRILLING EXTENSION

Digga's piling & drilling extensions (TPE) increase your skid steer loader's reach for added drilling depth or screw anchor (pile) installation. Manufactured in-house by Digga in Australia, using only the highest grade materials and strictest quality control, our skid steer and tracked loader extensions are engineered for use with auger / anchor drive units up to 22,000Nm of torque.

- Provides 3.5 – 4 metres of ground clearance for screw anchors or augers.
- Unique design gives the operator greater range and visibility.
- Engineered for drives up to 22,000 Nm.
- Optional Transport Frame.



MONITORING EQUIPMENT

TORQUE HUB

Replaces the Kelly Bar adaptor or mount directly onto the drive-head output shaft.

- 99%+ Accurate Torque Measurement.
- Superior design & engineered for tough conditions.
- Wireless in-cab display.
- To suit 75mm Square & 100mm Square shaft sizes.



TORQUE SPOOL

The flanged "spool" option utilises the same patented technology as the Torque Hub.

- 99%+ Accurate Torque Measurement.
- Superior design & engineered for tough conditions.
- Wireless in-cab display.
- To suit drives up to 500,000 Nm.



PRESSURE DIFFERENTIAL GAUGE

Digga's Pressure Differential Gauge offers an accurate way of measuring the hydraulic pressure being applied through the hydraulic motor and gearbox of your drive unit.



DIGGA'S - ALIGNMENT SYSTEM

Diggaalign is ideal for drilling, screw piling & core barrelling applications. Designed to show the operator when the pylon/pile/auger is off plumb, and helps to maintain accuracy throughout the installation.



BIGFOOT TRENCHERS

- Start Trenching with the crumber bar in the down position.
- Adjustable Skid Foot - Ensures the operator trenches to a set depth. Foot is visible from the cab - Ensures that the trencher is in the correct trenching position.
- 3 different chain options - Trench in most ground conditions.
- Australian Made Quality.
- 3 year gear box and 2 year motor warranty.

BIGFOOT TRENCHERS 1 1/8" CHAIN

	MINI BFT	BFT-900
Cutting Depths (mm)	Up to 900	Up to 900
Cutting Width (mm)	100, 150, 200	100, 150, 200
Length (mm)	1402	1920
Horizontal Height (mm)	645	668
Width (mm)	989	1212
Weight - 150mm Combo Chain (Kg)	TBA	261
Motor Size	2K Bell EATON	2K Bell EATON
Hydraulic Flow (LPM)	40-90	50-95
Max Pressure - Do not exceed (BAR)	240 bar @ 60 lpm	240 bar @ 60 lpm
Max Flow - Do not exceed (LPM)	95 lpm @ 200 bar	95 lpm @ 200 bar
Max Continuous Power (Kw)	25 Kw (34 hp)	25 Kw (34 hp)

BIGFOOT XD TRENCHERS - 2" CHAIN

	BFTXD 900	BFTXD 1200	BFTXD 1200HF	BFTXD 1500HF
Cutting Width (mm)	150, 200, 250, 300			
Cutting Depths (mm)	Up to 900	Up to 1200	Up to 1200	Up to 1500
Length (mm)	2225	2532	2532	2689
Horizontal Height (mm)	777	777	777	836
Width (mm)	1212	1212	1212	1212
Weight - 150mm Combo Chain (Kg)	388	405	424	461
Motor Size	2K Bell EATON	2K Bell EATON	6K Bell EATON	6K Bell EATON
Hydraulic Flow (LPM)	60-115	60-115	105-170	105-170
Max Pressure - Do not exceed (Bar)	240 bar @ 60 lpm		240 bar @ 130 lpm	
Max Flow - Do not exceed (LPM)	95 lpm @ 200 bar		170 lpm @ 180 bar	
Max Continuous Power (kw)	25 Kw (34 hp)		50 Kw (67 hp)	



HYDRIVE TRENCHERS

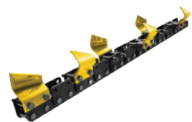
The Hydrive trencher is fitted with twin spoil augers for efficient spoil removal to both sides of the trench. The 3 point drive system allows for more usable horse power, providing greater efficiency for the trenching professional.

	HDT-900	HDT-1200	HDTXD-1200
Cutting Depths (mm)	Up to 900	Up to 1200	Up to 1200
Cutting Width (mm)	100, 150, 200, 250, 300		150, 200, 250, 300, 350
Length (mm)	1888	2160	2478
Horizontal Height (mm)	802	802	957
Width (mm)	1212	1212	1212
Motor Size	2K Bell EATON	2K Bell EATON	2K Bell EATON
Hydraulic Flow (LPM)	50-80	50-80	60-115
Max Pressure - Do not exceed (BAR)	240 bar @ 60 lpm		240 bar @ 60 lpm
Max Flow - Do not exceed (LPM)	75 lpm @ 200 bar		115 lpm @ 130 bar
Max Continuous Power (Kw)	25 (34 hp)		25 (34 hp)



CHAINS

All Digga trenchers are available with a variety of chain types and widths to suit your individual needs. We only use anti back flex chains to give you better performance.



EARTH

Cup tooth on every second station. Best for soft clean ground with no floaters or tree roots.



COMBO

Combination of earth and tungsten teeth. Suitable for most applications. Cuts through hard soils, roots, soft shale and rocky ground.



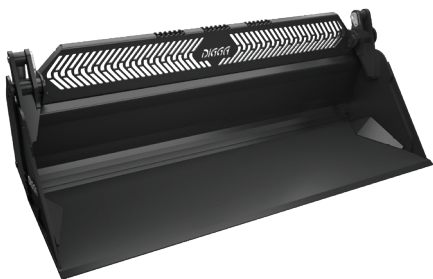
DIGGATAC

Full tungsten teeth on every station. Best for rocky hard shale, asphalt and frozen ground.

4 IN 1 BUCKETS

Australian designed and manufactured using only the highest quality components and materials. Digga has an extensive bucket range designed to suit Skid Steer Loaders of all sizes.

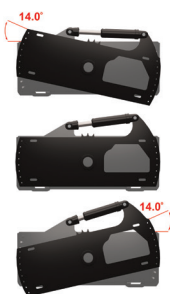
- Full range available from 880mm to high volume 2200mm.
- Grabbing teeth profiled on both front/rear overlap for greater grip of logs or other debris.
- Side curved sections create greater opening bucket width of 860mm.
- 1 piece heavy duty fully welded design for clear vision of front bucket edge.
- Heavy duty steel 20mm floors on standard range.
- Optional reversible bolt on cutting edge for all 3 edges of the bucket.
- Optional chisel or tiger teeth, pin on design.



TILTING BUCKET (6 IN 1)

Tilting 4 in 1 Bucket provides the operator with full radial control of the cutting angle. Slim line tilt frame design minimising additional weight and distance from the machine maximising the full lift capacity of the machine.

- Full range available from 1550mm to high volume 2130mm.
- Fully enclosed, integrated valve block, with built in locking valve and STC hydraulic fittings providing compact secure protection to all hydraulics.
- Hydraulic ram geometry creates exceptional tilting forces.
- Hardened wear plates to increase wear life on moving parts of tilt mechanism.



BUCKET ACCESSORIES

BUCKET ACCESSORIES



QUICK RIPS

Suitable for ripping soils and clay.

- Easy 4 in 1 bucket .
- pickup design.
- Kwik rips available in either 3, 5 or 7 tynes.



SPREADER BARS

Most standard sizes available,
other sizes available on request.

- Easy 4 in 1 bucket pickup design.
- Suitable for spreading/levelling soils.
- Spreader available in various lengths and widths.

GENERAL PURPOSE BUCKET

The Digga General Purpose Bucket is ideal for grading, scraping, dozing dirt and material spreading. Features include a low profile design, convenient steps for safe easy cab access and heavy duty wear strips.

- Full range available from 1450mm to high volume 2200mm.
- Low profile design.
- Heavy duty wear strips.
- Optional cutting edge.
- Australian made quality.



ROCK BUCKET

The Digga Rock Bucket is used for fast clean-ups, sifting out debris & rocks, and gathering material away from buildings and obstructions. Rock buckets can also be used in waste processing applications.

- 4 sizes available, ranging from 1740mm (68") to 2222mm (87").
- Manufactured from solid 28mm 1045 grade steel round bar.
- 52mm (2") tyne spacing.
- Available with built-in skid steer mounting frame or optional bolt-on universal skid-steer and tractor loader mounts.



GRAPPLE ATTACHMENT OPTIONS

Hydraulically operated, the grapple is fitted to a rock bucket to provide a grabbing arm to trap and contain debris such as rocks, branches and shrubbery.

- Easy to assemble with replaceable grapple teeth.
- Grapple fits 1740mm, 1900mm, 2060mm and 2222mm rock buckets.
- Wide opening grapple with aggressive rake-back tyne design.



*Not suitable for Kubota SSV models

DOZER BLADE

The Dozer Blade is a versatile attachment for dozing, levelling ground and general earthmoving work.

- Universal skid steer loader quick-attach mounting.
- Large 3" centre pivot pin with hardened steel bushings.
- Full length high carbon steel replaceable skid shoe.
- Reversible 3/4" x 200mm bolt-on cutting edge & formed moldboard 8mm thick & 700mm high.
- Angle & tilt cylinders are interchangeable and equipped with self-aligning bushings.
- Optional electrical switch, plug'n'go 8 pin skid steer connection, and electrical control box.

Model	2100mm			2400mm		
	FIXED BLADE	ANGLE ONLY	ANGLE AND TILT	FIXED BLADE	ANGLE ONLY	ANGLE AND TILT
Weight (Kg)	283	475	519	315	507	590
Height (mm)		725			762	
Width (mm)		2133			2400	
Width at 15° angle (mm)	N/A	2082		N/A	2318	
Width at 30° angle (mm)	N/A	1880		N/A	2078	
Angle left & right	N/A	±30°	±30°	N/A	±30°	±30°
Angle tilt	N/A	N/A	±14°	N/A	N/A	±14°



BUCKET BROOMS

Sweep and collect all kinds of debris in factories, car parks, road construction, stock yards, shipping containers and more.

- Easy to use built-in-brush adjustment handles.
- Replaceable cutting edge on bucket.
- 24" replaceable 1 piece poly brush.
- 1600mm to 3000mm widths available.
- High Flow models available upon request.

	Standard Models	High Flow Models
Rec Flow Range (LPM)	30-75	75-230
Max Pressure (BAR)	205	240



OPTIONAL SIDE
BROOM ATTACHMENT
AVAILABLE



OPEN FACE BUCKET BROOM

An open face broom is a bucket broom with an open front allowing you to sweep right up against walls and gutters.

	Standard Models	High Flow Models
Max Flow (LPM)	75	230
Max Pressure (BAR)	205	240

- 1 piece poly brush for longer brush life and easy replacement.
- Sizes available; 1600mm, 1800mm and 2000mm.
- Replaceable machine pickups for multiple machine use.
- Height adjustable.
- High flow models available.
- Easy to empty bucket.



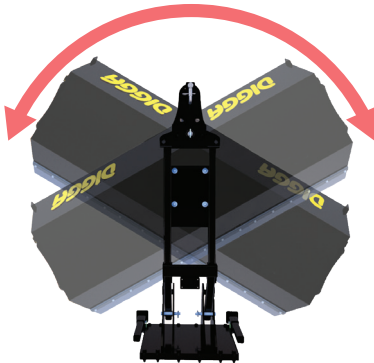
ANGLE BROOMS

- 1800mm to 2500mm models available.
- Quick adjust support legs for easy storage and connection.
- Heavy duty adjustable jockey wheel.
- Bi-directional slew presets 15° or 30° from centre.
- 24" replaceable 1 piece Poly Brush.

Rec Flow Range (LPM)	30-75
Max Pressure (BAR)	205



15° OR 30° BI-DIRECTIONAL SLEW FROM CENTRE



PALLET FORKS

Australian made pallet forks, quality tested to ensure strength and reliability.

TO SUIT MULTIFIT SKID STEERS

- Tyne Bar Locking System (Patent Pending).
- Easy width adjustment with lockable tyne positions.
- Tynes load rating tested to ISO 2330 Standards.
- 1500kg and 1800kg load ratings available.
- Safety guard folds down for compact storage.
- Machine entry step can be mounted on either side.



	1500kg	1800kg
Weight (kgs)	138	157

TO SUIT NON MULTIFIT MACHINES

- Load rating tested to Australian standards AS2359.1.
- 1200kg, 1600kg and 1900kg load ratings available.
- Bale spears/pallet fork combo frame also available.



	1200kg	1600kg	1900kg
Weight (kgs)	146	165	173

EZI LOADA RAMPS

A light weight loading ramp with enhanced safety that delivers on quality, performance and is cost effective. European designed and engineered, the new Digga Ezi-Loada ramps feature the most advanced design in the Australian market today. Digga's new aluminium loading ramps include a Standard range - LR (1.5t to 6.2t) & a Universal range - LRU (5.2t to 9t).

- 3 different connection options.
- Enhanced rail strength.
- Patented, extruded, double T rail with interlocking rung design.
- Superior strength and durability.

Code	Tonnage	Length	Beam	Int Width	Ext Width	Weight
LR152530	1.5	2500mm	64mm	255mm	300mm	14kg
LR233030	2.0	3000mm	100mm	300mm	360mm	23kg
LR303030	3.0	3000mm	115mm	300mm	360mm	26kg
LR303535	3.0	3500mm	120mm	350mm	410mm	36kg
LR353535	3.5	3500mm	125mm	350mm	410mm	37kg
LR403545	4.0	3500mm	140mm	450mm	510mm	46kg
LR473545	4.7	3500mm	155mm	450mm	510mm	46kg
LR473550	4.7	3500mm	165mm	500mm	560mm	51kg
LR593545	5.9	3500mm	150mm	450mm	510mm	53kg
LRU593550	6.2	3500mm	150mm	500mm	560mm	60kg
LRU663550	7.0	3500mm	170mm	500mm	560mm	61kg
LRU823550	9.0	3500mm	180mm	500mm	560mm	77kg

STANDARD (LR)



UNIVERSAL (LRU)



ROAD PROFILER

The Digga Profiler is perfect for planing (mill) rock, concrete and asphalt.

- Digga planetary drive delivers high torque.
- Standard and high flow models available.
- Independent self-levelling depth adjustment plates which allow for precise lapping cuts and taper cuts.
- High rear spoil clearance to prevent recirculation of material.
- Convenient ergonomic electro-hydraulic control joystick for depth, tilt and side shift standard.
- Water nozzle kit for dust suppression supplied as standard. (water tank sold separately).
- 300mm Standard Flow Model.
- 450mm and 600mm High Flow Models.

	Standard Flow	High Flow
Rec Flow Range (LPM)	45-84	90-166
Max Pressure (BAR)	240	240



*Water tank
sold separately*



VIBRATORY ROLLER

These high production rollers are ideal for rental fleets, contractors, landscaping, roadways, walk ways, bike paths, golf courses, bridges and parking lots.

- Versatile compaction unit for use on sand, gravel, soils, crushed stoned and other aggregates.
- Delivers up to 3500kg of dynamic force when operating at 95 lpm.
- Steel drum has an adjustable steel scraper blade between frame and drum ensuring smooth and uniform compaction performance.
- Hydraulic drives for this roller are fully isolated and protected to provide maximum performance and reliability.
- Padded Foot Roller also available.

	66"	84"
Drum widths (mm)	1675	2133
Dynamic Force (kgs)	3500	4250
Weight (kgs)	957	1147
Max Flow (LPM)	95	95



VEGETATION MANAGEMENT STICK RAKE

Ideal for fast clean-ups, vegetation management, sifting soil/rocks and removing unwanted shrubbery and overgrowth. Material can be sifted and sorted to clear out unwanted debris and leave good soil or material behind. Available for multifit and Cat skid steer loaders.

- 2133mm rake width (84").
- Heavy duty 16mm thick tynes.
- Optional Safety Guard.
- Convenient steps on either side for easy cab access.

Length (mm)	2133
Height (mm)	800
Width (mm)	492
Tyne Spacing (mm)	158
Number of Tynes	13
Weight (Kg)	290



VEGETATION MANAGEMENT SLASHER

Grass slashing attachment for effective cutting and clearing of grass and low ground shrubbery.

- Twin blade, dual rotation, single cutting bar.
- Available with fixed or side shift frame.
- Rounded side skids for smoother manoeuvrability over uneven terrain.
- 3 width options; 1250mm (49"), 1500mm (59"), 1800mm (70").
- Optional Jockey Wheel.
- Adjustable cutting height 40 - 140mm.

Rec Flow Range (LPM)	20-80
Max Pressure (BAR)	240



VEGETATION MANAGEMENT ROTARY AXE

Digga's heavy duty 72" Rotary Axe is the ultimate attachment for clearing and shredding thick bush and scrub. Working in conjunction with the heavy duty push bar, the front hood opens up exposing the $\frac{3}{4}$ " blades past the guards, enabling close up axe-like cuts to remove trees up to 7" (180mm) in diameter.

- Includes: Stump grinding carbide teeth to increase shredding performance and allow stump removal.
- 72" Cutting width with alternating bevel blade design - providing a deep penetrating, axe-like, self-clearing cut.
- Blades are made of $\frac{3}{4}$ " thick high grade steel with a reversible design for added blade life.
- Heavy duty construction allows for lower centre of gravity and better stability on hillsides.
- Highly visible pressure gauge - Prevents excessive stalling which would otherwise cause overheating, providing feedback to the operator to help maintain peak performance.

Recommended Flow (LPM)	115-170
Max Pressure (BAR)	275
Weight (kg)	911
AOL Width (mm)	1966



VEGETATION MANAGEMENT MULCHER

The Digga Magnum Mulcher provides High Flow Skid Steer Loaders with the versatility of grinding small and large material, tree or brush even above ground stumps with just one operator. Ideal for clearing fire breaks, land clearing, maintenance of park or forestry trails, vegetation management and re-mediation.

- Hydraulic driven, self aligning belt drive; low maintenance and great durability.
- Fixed hammers with replaceable carbide teeth.
- Shreds up to 8" diameter hardwood trees.
- Adjustable push bar.
- Skid Steer model comes standard with oil cooler.
- On-board pressure gauge easily viewed from operator's station to monitor system on units fitted with oil coolers.
- Replaceable abrasion resistant AR400 wear plate on skid shoes.
- Deflector door standard to control particle size and discharge direction.
- 60" (1500mm) cutting width.

Rec Flow Range (LPM)	115-170
Weight (kg)	1150
Width (mm)	1850



LANDSCAPING RAKES

POWER RAKE

The fully hydraulic Digga Power Rake grades, levels, rakes and removes debris, pulverising and preparing the ground for a new seed bed or turf. De-thatched or remove old lawns and weeds all with one tool.

- Heavy-duty frame extends life.
- Hydraulic angling up to 20° either direction.
- Dual direct-drive motors deliver up to 40% more power to the drum eliminating drive chains and sprockets, reducing power loss to the drum and maintenance costs.
- Bi-directional drum works soil in both directions.
- Slews for windrowing debris.
- 1828mm (72") and 2286mm (90") models available.

Rec Flow Range (LPM)	45-150
Max Pressure (BAR)	240



HARLEY RAKE

The most versatile attachment you will ever own. Pulverise and prepare seedbed, de-thatch or remove old lawns and weeds all with one tool. Cut drainage grades, skim passes for over-seeding or prepare and condition job sites for seeding. Remove rock and other debris by windrowing or make a pile for easy pick-up with your loader bucket.

- Single hydraulic motor.
- Pure carbide teeth for longer life.
- Dual independently adjustable gauge wheels.
- Adjustable urethane barrier.
- Slews for windrowing debris.
- 1473mm, 1727mm, 2006mm and 2159mm models available.

Rec Flow (LPM)	30-64
Max Flow (LPM)	75-94



ROTARY TILLER

The ideal attachment for ground preparation prior to turfing, planting and seeding. Turns the toughest ground into a beautiful garden bed.

- Replaceable dual rotation and bi-directional tynes allow for effective cultivation of up to 150mm depth.
- Unit has two position off-set mount for easier tilling close to obstacles.
- Front edge is designed to level out uneven ground and touch ups.
- Can be used with or without adjustable height scarifier (optional).
- Single motor requiring less maintenance.

Rec Flow (LPM)	52-64
Max Pressure (BAR)	240
Weight (kgs)	453
Overall Width (mm)	1930
Operating Width (mm)	1676



STUMP GRINDER

Remove tree stumps into wood chips quickly with the Digga Stump Grinder. Fingertip controls have been designed into the unit to allow the operator to adjust the speed of swing and lift functions to accommodate the machine & operator's maximum performance.

- Grinds stumps up to 255mm below ground.
- 28 Carbide tipped cutting teeth.
- 60° Range of motion covers 1100mm in a single sweep.
- Tooth pattern allows side to side and vertical cuts.
- Easy access to all drive components for maintenance.

Rec Flow (LPM)	60-80
Wheel Diameter (mm)	660
Weight (kgs)	326



OTHER ATTACHMENTS

SKID HOE

Quick fit attachment for digging trenches and footings up to 1.7m deep. Fitted standard with 300mm (12") bucket.

- 250mm, 300mm, 350mm, 400mm, 450mm bucket options.
- Manual side shift frame for optional off centre digging.



DEBRIS CLEANER

Quality Australian made debris cleaner for use in removing overspill and debris from under conveyor belts in manufacturing and mining applications.

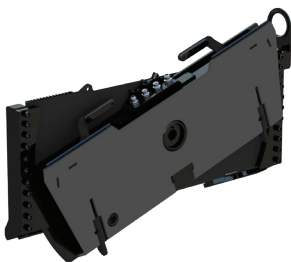
- Available in 2800mm and 3300mm reach.
- Hydraulic slew Up to 87°.
- Replaceable 350mm paddles & teeth.



TILT ATTACH

Fully utilise your skid steer loader attachment with the powerful Tilt Attach. Fitted between the machine pick up and the attachment, it provides the versatility to tilt a multitude of attachments.

- Allows 18° left or right tilt off centre line.
- Tilts bucket and landscaping implements for more precise grading, levelling and trenching.





Focus Hire PTY LTD

ABN 27 624 650 406

7-9 Kearney St, BAYSWATER VIC 3153

Phone: 03 9756 3950

Email: sales@focusmachinery.com.au

www.focusmachinery.com.au